

Multiplication and Division

Multi-Step Word Problems



Combined Calculations

1. A box of Christmas crackers contains 15 packs. Each pack contains 24 crackers. A shop buys six boxes. How many crackers will there be in the six boxes?



Combined Calculations

2. Sets of eight pieces of tinsel are sold at a Christmas Fair for \$1.72 per set. The decorations are bought in boxes which contain 24 sets and cost \$17.28. How much does each decoration cost on average for the stall holder to buy and for how much is each sold for?



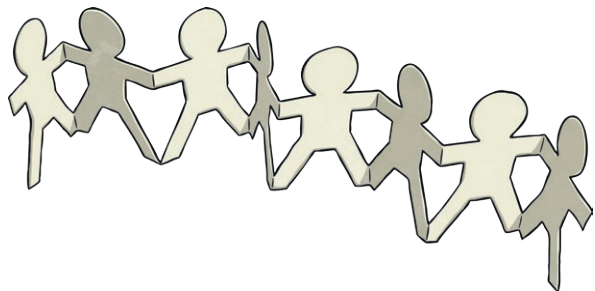
Combined Calculations

3. Santa Claus has a team of elves. Each elf makes 17 presents each day and works five days a week. 25 925 presents are made each week. How many elves are there making presents?



Combined Calculations

4. Packets of paper chains contain 240 pieces of chain. Packets are boxed in 12 rows of nine packets. How many pieces of paper chain are in each box?



Combined Calculations

5. At a Christmas party, there are six boxes of Christmas chocolates. Each box contains 12 packets, with each packet containing nine Christmas chocolates. The chocolates are divided equally among 54 people. How many chocolates does each person receive?



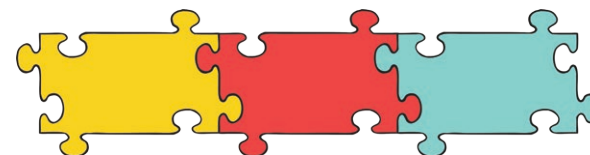
Combined Calculations

6. Grace wants to buy seven of her friends a Christmas gift. She intends to buy each friend the same gift. She has \$38.75 to spend. She has to choose between a mirror for \$5.50 and a notepad and pen set for \$5.60. Explain what Grace will do.



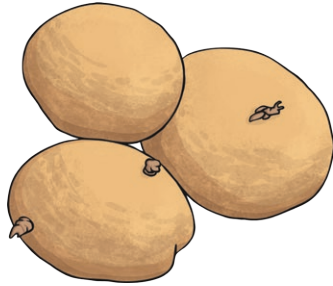
Combined Calculations

7. A catalogue company make small puzzles which schools can buy as gifts for their children. One school buys 32 toys for each of the seven classes. The toys cost 82c each. How much money will the school spend on the gifts?



Combined Calculations

8. A market stall holder buys 270kg potatoes to sell at Christmas. He divides the potatoes into 750g bags, which he sells for 28c each. He sells all the bags. How much money will he collect by selling all the potatoes?



Combined Calculations

9. A Christmas meal for elderly people is organised by a community centre. 90 people are catered for. Explain how the tables could be organised so each table has the same number of people. No table can have more than 20 people or less than four people.



Combined Calculations

10. A greetings card company makes Christmas cards. The cards are sold in packs of 18. At the end of production, there are 729 cards left. How many complete packs can be made from these cards?

